



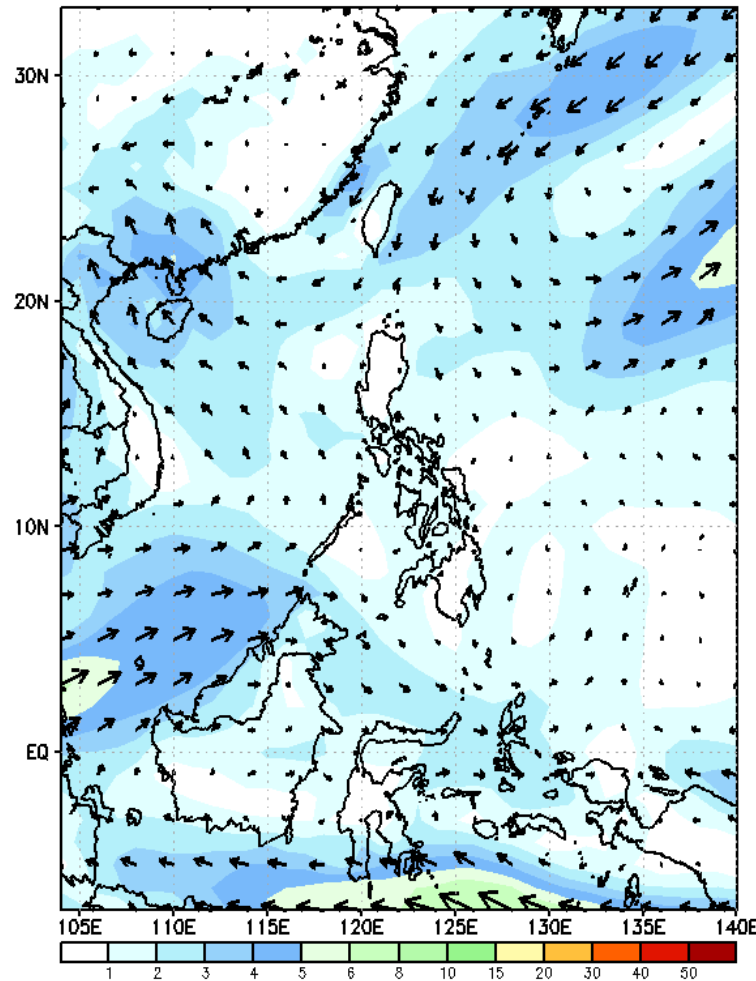
# Week 1 & Week 2 Forecast for the Philippines using GEFS Model



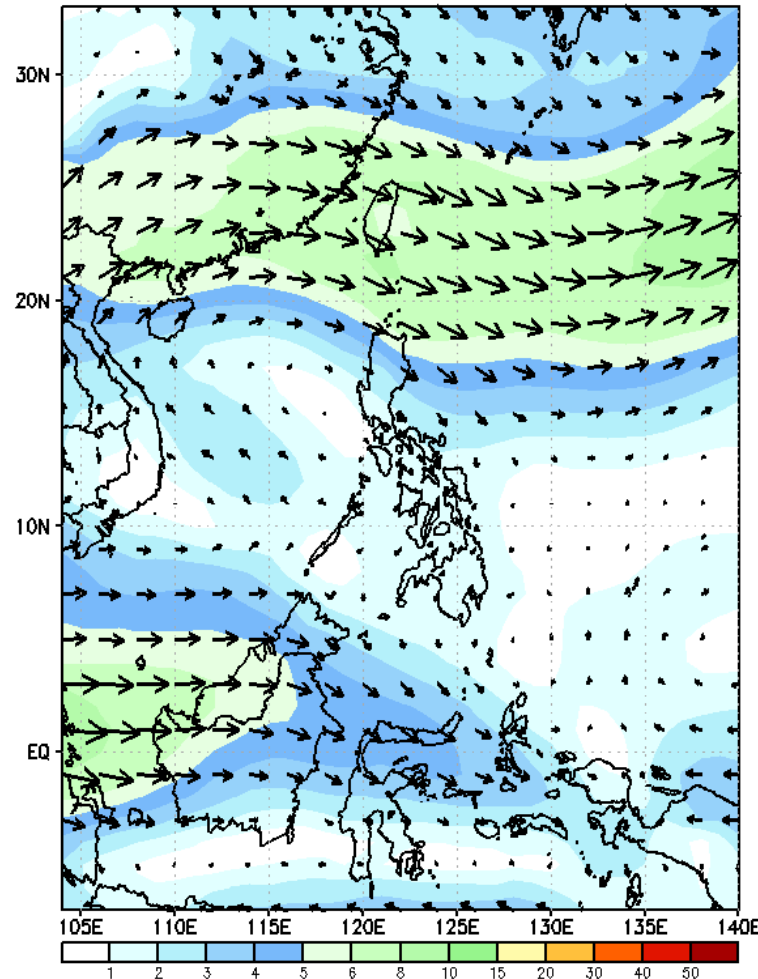
# GEFS Week-1 Forecasts: Wind Anomaly Forecast

Week 1: May 08-14, 2023

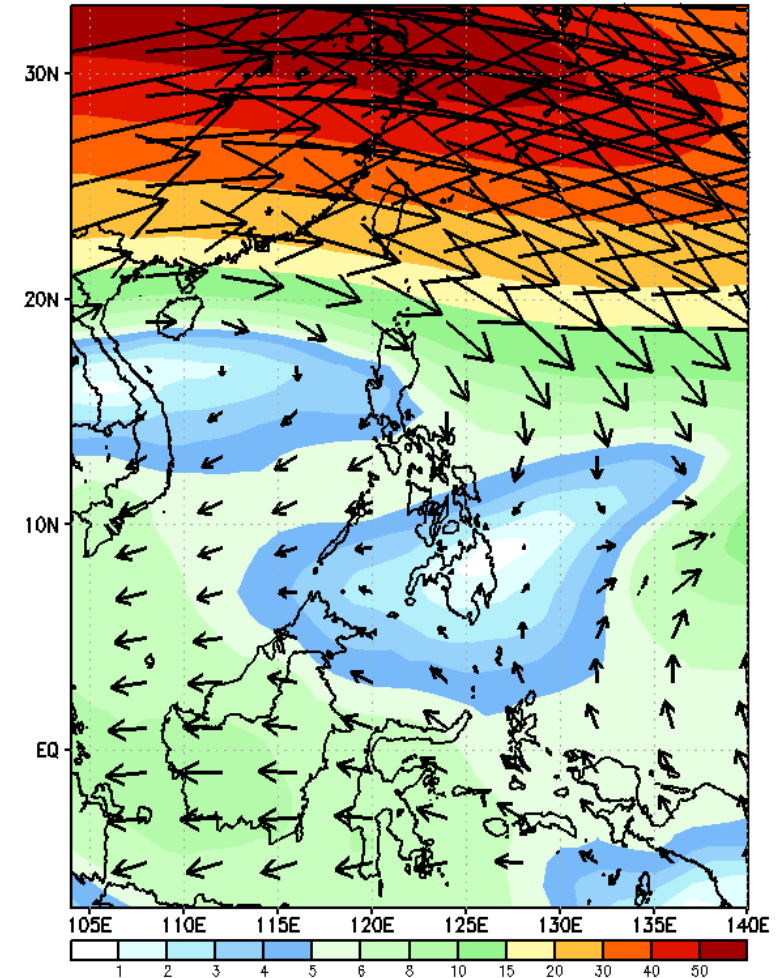
GEFS Week-1 850-hPa Wind Total  
Valid: 20230508 - 20230514



GEFS Week-1 700-hPa Wind Total  
Valid: 20230508 - 20230514



GEFS Week-1 200-hPa Wind Total  
Valid: 20230508 - 20230514



North to northwesterly wind is forecasted to prevail over northern Luzon while Easterlies is forecasted to affect the rest of the country; expect dry and hot weather during the forecast period.



The Weather and Climate Authority

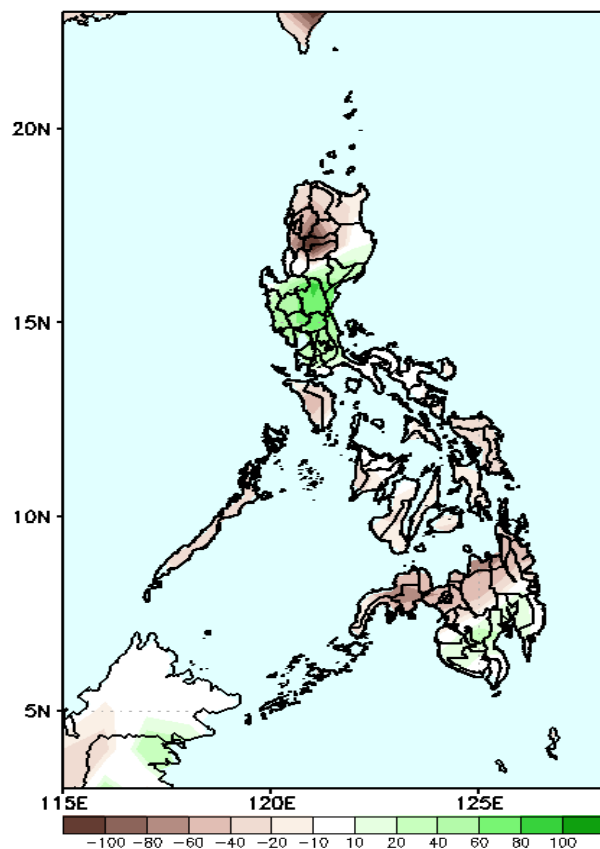


# Precipitation Anomaly and Exceedance Probability > 25/50 mm



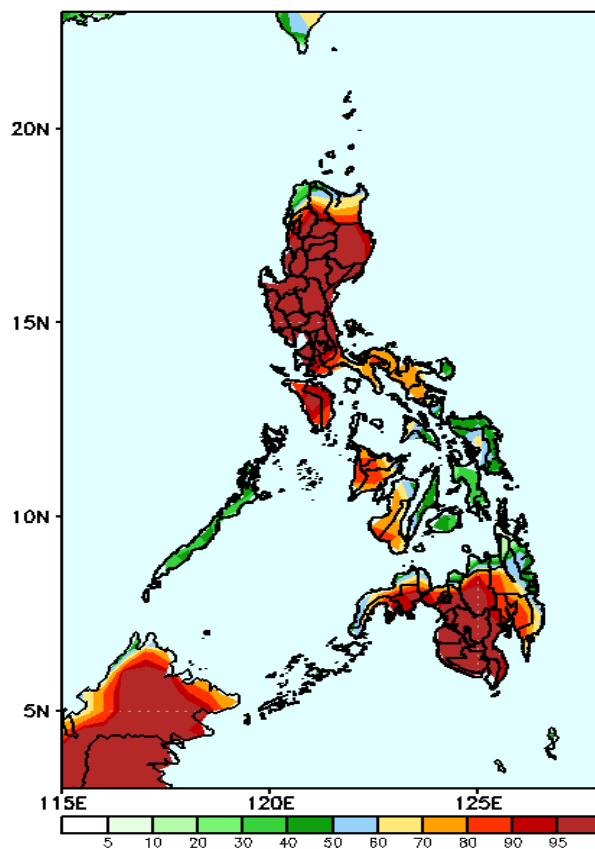
Week 1: May 08-14, 2023

GEFS Week-1 Precip Anomaly  
Valid: 20230508 - 20230514



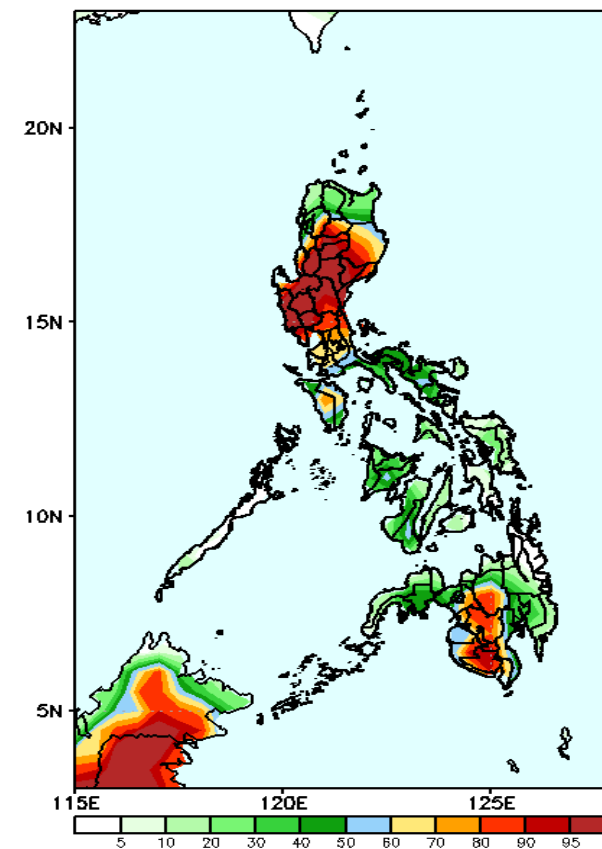
Rainfall deficit of 40-100mm is expected in Ilocos Region & CAR; 40-90 mm in southern Luzon, Visayas and northern Mindanao (including Zamboanga Sibugay) while 40-90mm increase of rainfall in Central Luzon during the forecast period.

GEFS Week-1 Exceedance Prob. > 25mm  
Valid: 20230508 - 20230514



High to a very high probability to exceed 25mm of rainfall in Metro Manila, Central Luzon, Mindoro Provinces, Western Visayas, Camarines Provinces, Albay, and most parts of Mindanao and Northern Luzon while low to moderate likelihood over the rest of the country.

GEFS Week-1 Exceedance Prob. > 50mm  
Valid: 20230508 - 20230514



High to a very high probability to exceed 50mm of rainfall over Central Luzon, most parts of Northern Luzon, Metro Manila, SOCCSKSARGEN, BARMM, Lanao Provinces, and Bukidnon while low to moderate likelihood over the rest of the country.

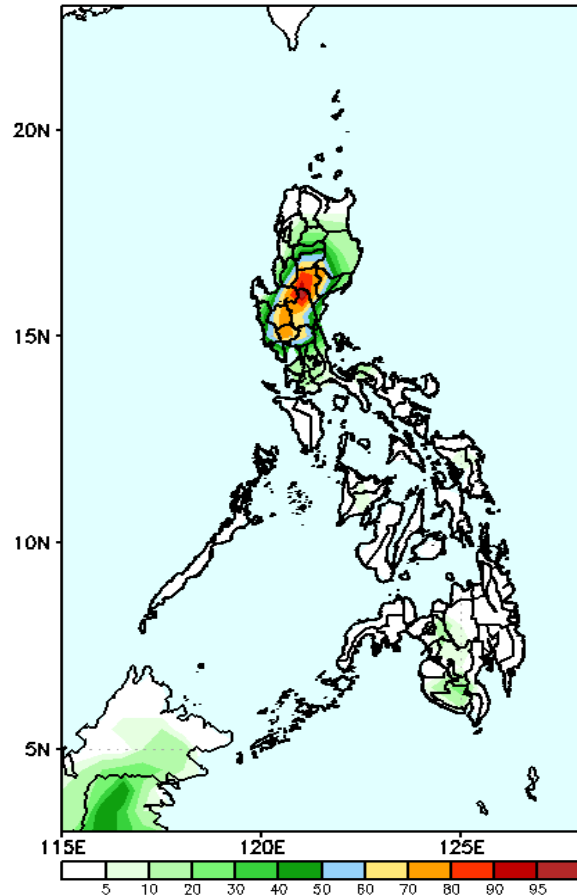


# Exceedance Probability > 100/150/200 mm

Week 1: May 08-14, 2023

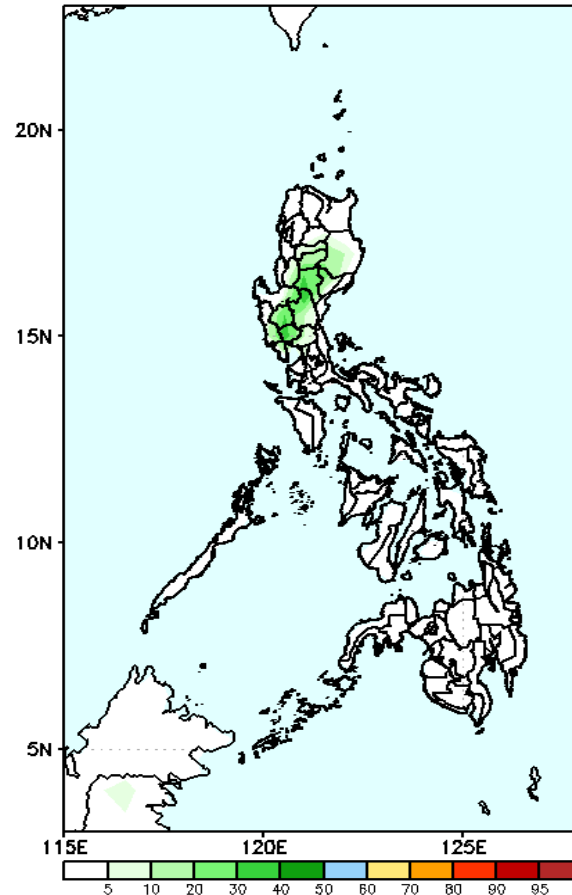
- Very high probability
- High Probability
- Moderate Probability
- Low Probability

GEFS Week-1 Exceedance Prob. > 100mm  
Valid: 20230508 - 20230514



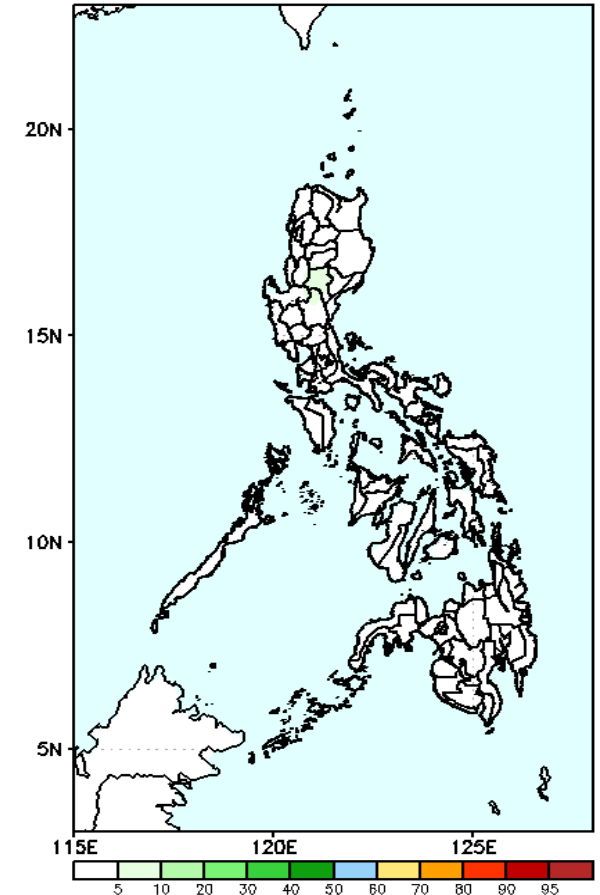
Moderate to a high probability to exceed 100mm of rainfall over Benguet, Mountain Province, Nueva Vizcaya, Quirino, and most parts of Central Luzon while low likelihood over the rest of the country.

GEFS Week-1 Exceedance Prob. > 150mm  
Valid: 20230508 - 20230514



Low probability of rainfall to exceed 150mm in most parts of the country during the forecast period.

GEFS Week-1 Exceedance Prob. > 200mm  
Valid: 20230508 - 20230514



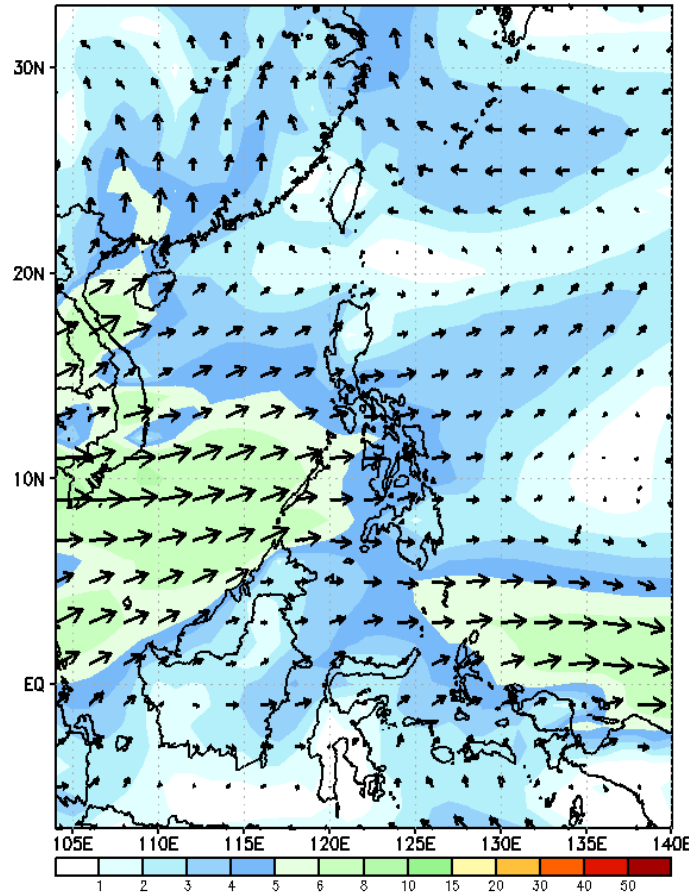
Low probability of rainfall to exceed 200mm in most parts of the country during the forecast period.



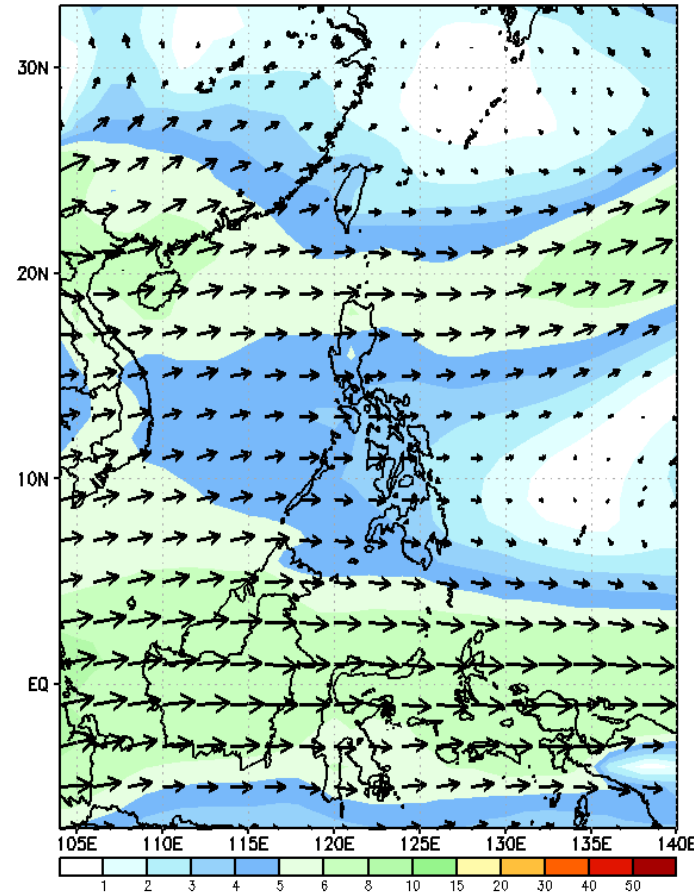
# GEFS Week-2 Forecasts: Wind Anomaly Forecast

Week 2: May 15-21, 2023

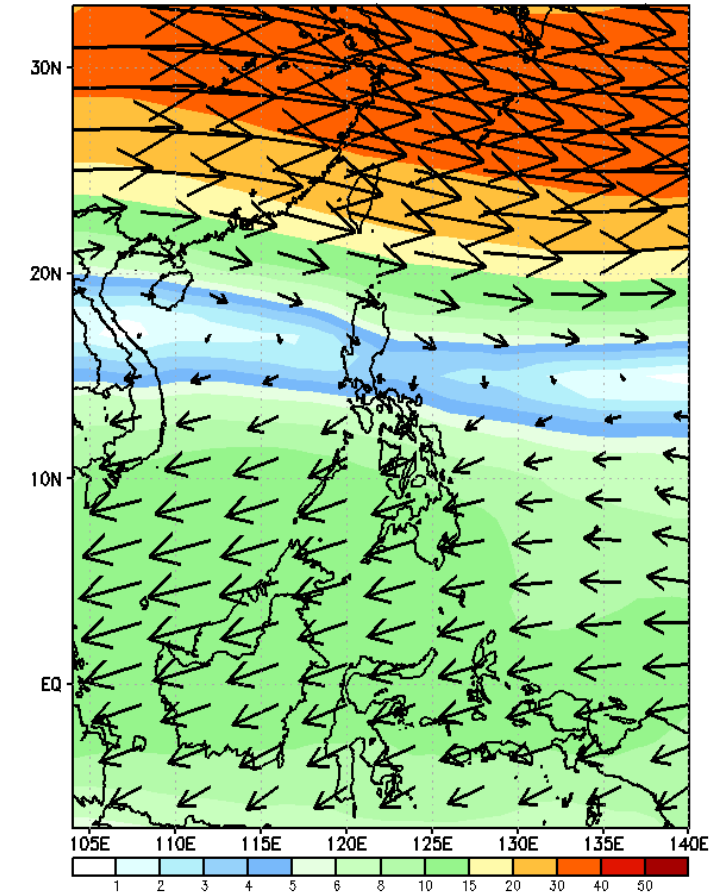
GEFS Week-2 850-hPa Wind Total  
Valid: 20230515 - 20230521



GEFS Week-2 700-hPa Wind Total  
Valid: 20230515 - 20230521



GEFS Week-2 200-hPa Wind Total  
Valid: 20230515 - 20230521



Northwesterly to westerly windflow is forecasted to affect the western section of the country, while easterlies affect the rest of the country; expect dry and hot weather during the forecast period.

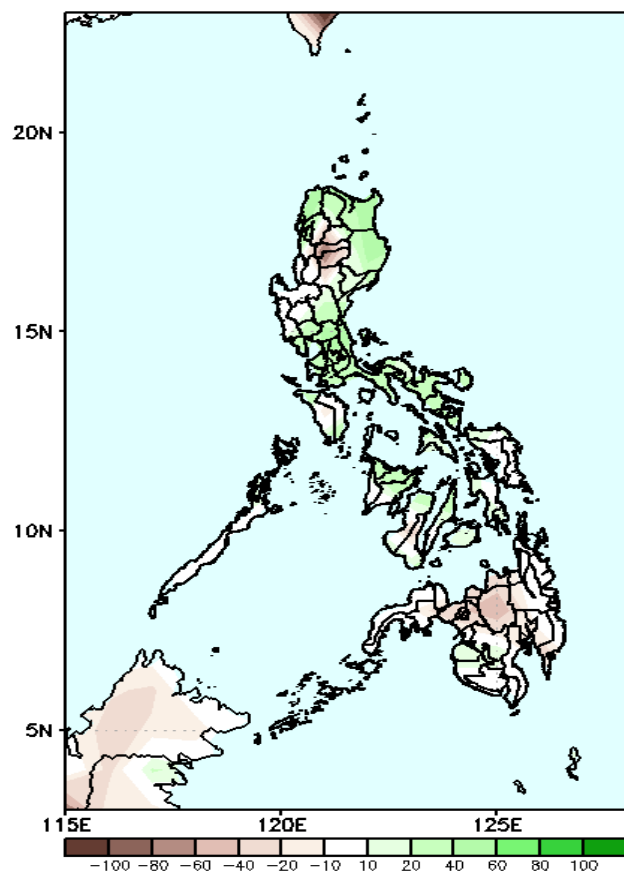


# Precipitation Anomaly and Exceedance Probability > 25/50 mm



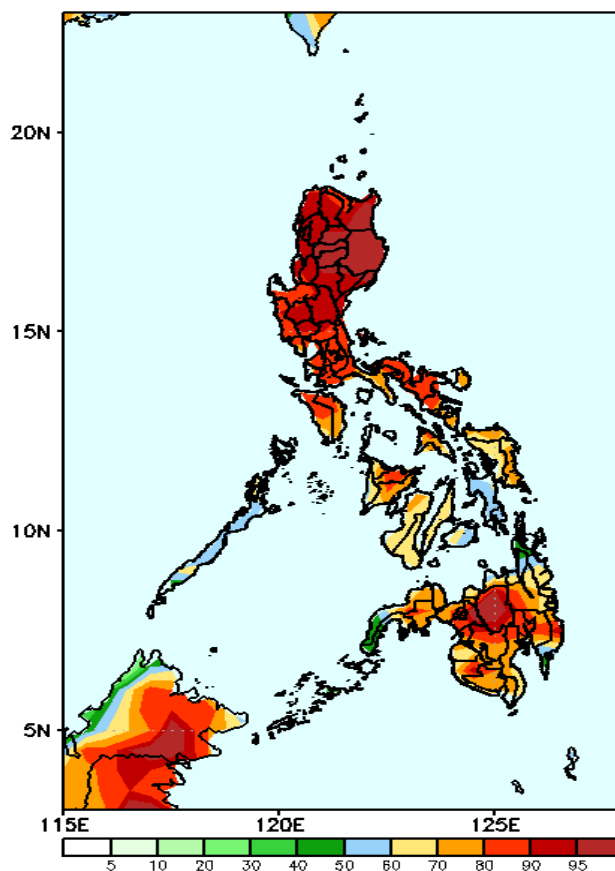
Week 2: May 15-21, 2023

GEFS Week-2 Precip Anomaly  
Valid: 20230515 - 20230521



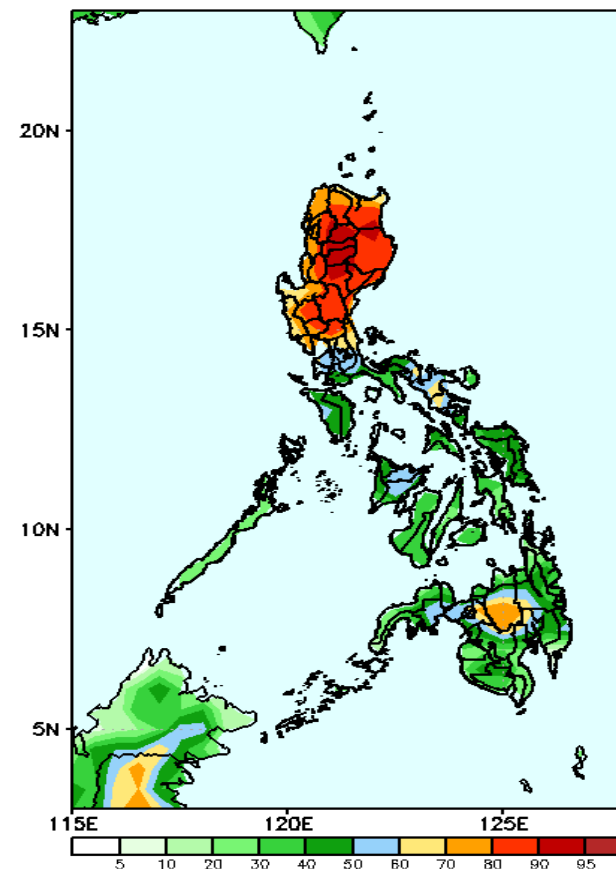
Increase of rainfall of 20-80 mm is expected in most parts of Luzon, Visayas and Visayas while 20-60mm rainfall deficit in Mt. Province, Ifugao and most parts of Mindanao during the forecast period.

GEFS Week-2 Exceedance Prob. > 25mm  
Valid: 20230515 - 20230521



High to a very high probability to exceed 25mm of rainfall in most parts of the country.

GEFS Week-2 Exceedance Prob. > 50mm  
Valid: 20230515 - 20230521



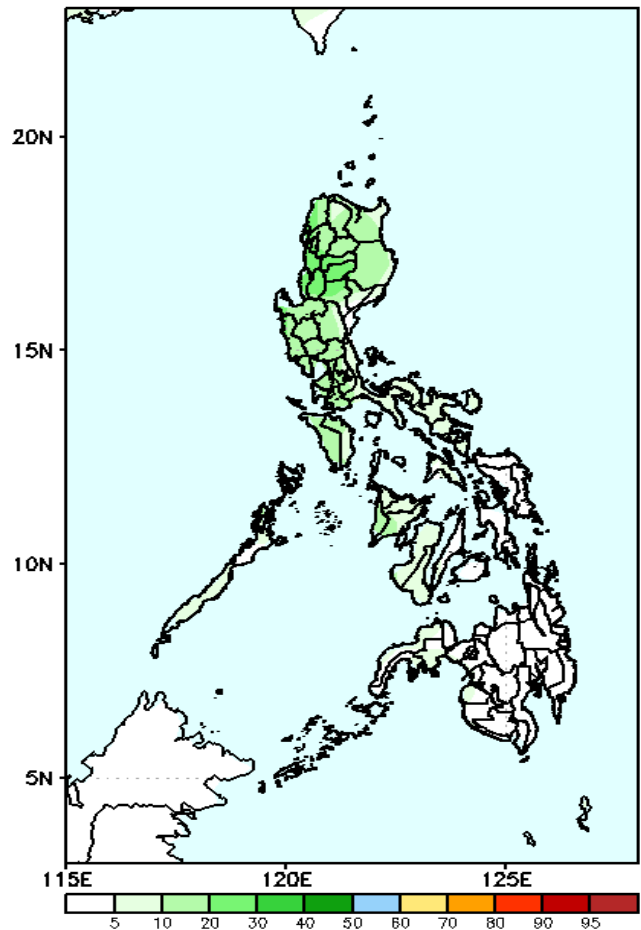
High to a very high probability to exceed 50mm of rainfall over Northern and Central Luzon, Metro Manila, Bukidnon, and portions of Lanao Provinces, Maguindanao Provinces, and Cotabato while low to moderate likelihood over the rest of the country.



# Exceedance Probability > 100/150/200 mm

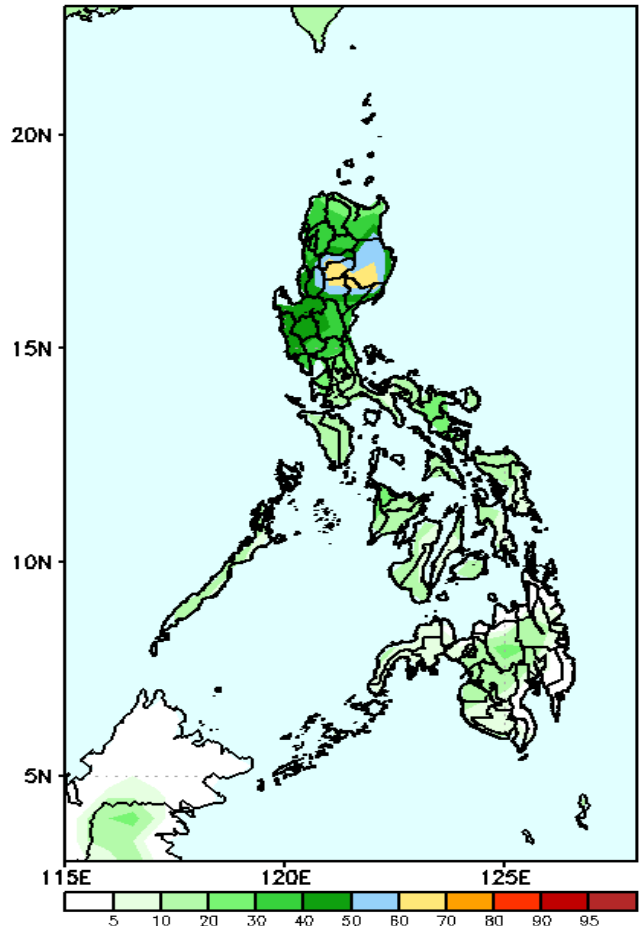
## Week 2: May 15-21, 2023

GEFS Week-2 Exceedance Prob. > 150mm  
Valid: 20230515 – 20230521



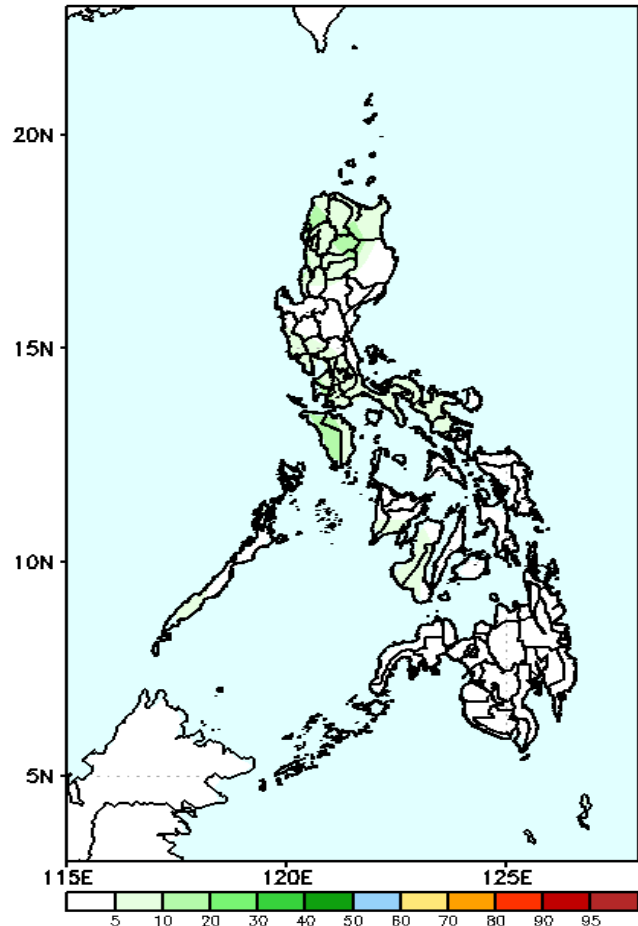
Moderate to a high probability to exceed 100mm of rainfall in most parts of Northern and Central Luzon while low likelihood over the rest of the country.

GEFS Week-2 Exceedance Prob. > 100mm  
Valid: 20230515 – 20230521



Low probability of rainfall to exceed 150mm in most parts of the country during the forecast period.

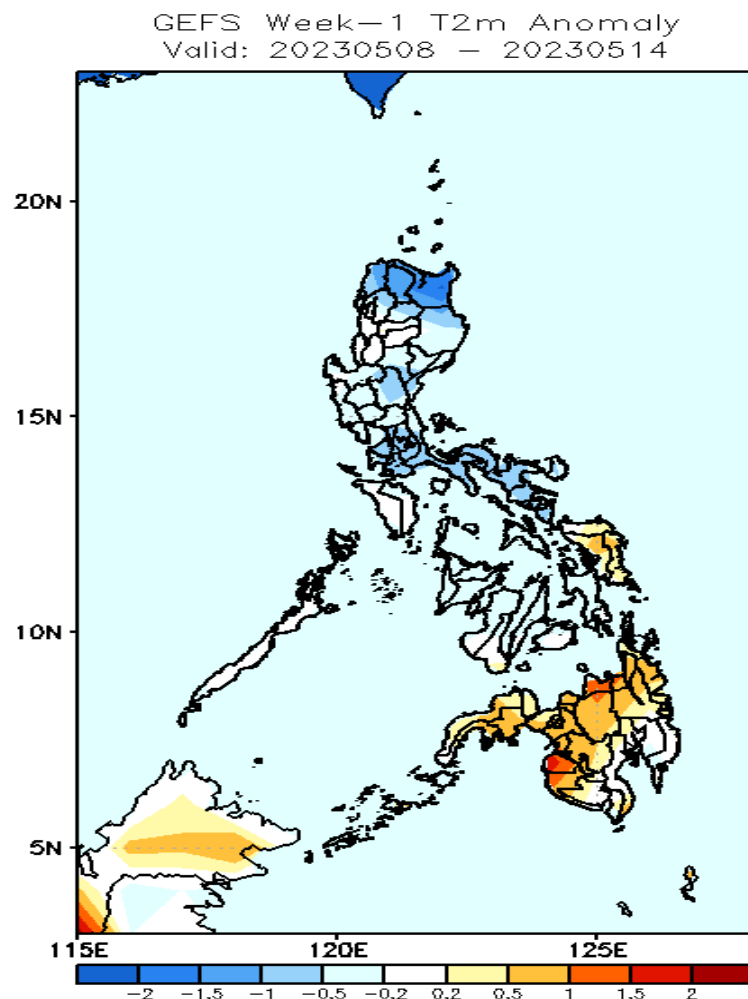
GEFS Week-2 Exceedance Prob. > 200mm  
Valid: 20230515 – 20230521



Low probability of rainfall to exceed 200mm in most parts of the country during the forecast period.

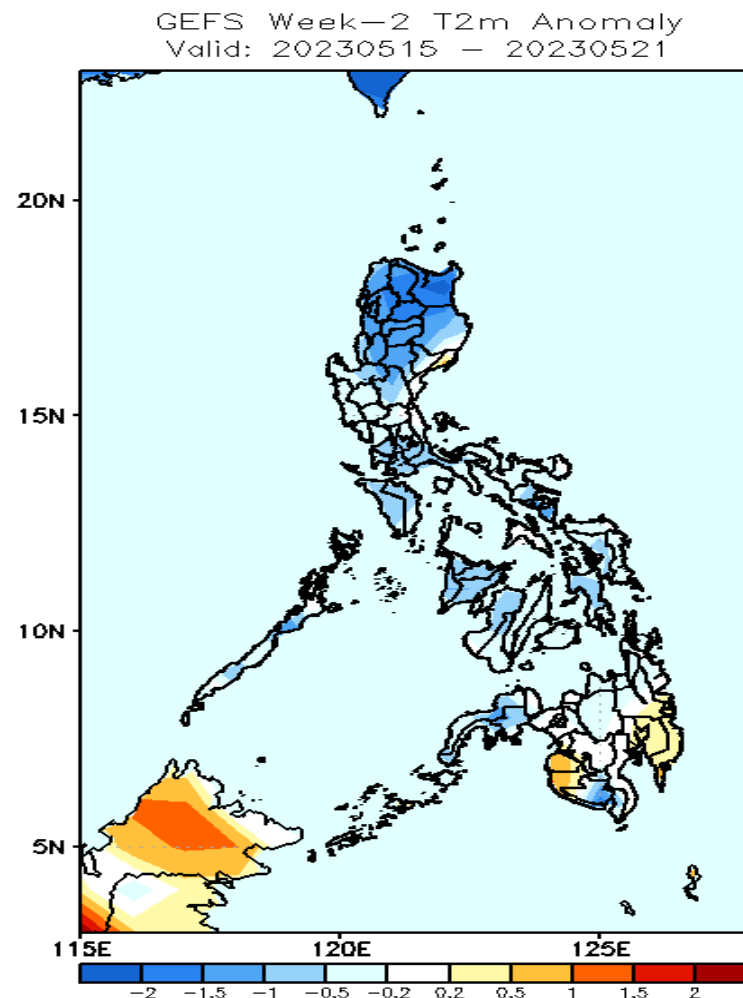


# GEFS Week-1 & 2 Forecasts: T2m Anomaly



## 2m Temperature Week 1: May 08-14, 2023

Cooler than average surface air temperature will likely experience in Ilocos Norte, Apayao and Cagayan; average to slightly cooler for the rest of Luzon, most parts of Visayas and Davao Region while slightly warmer to warmer than average surface air temperature in Samar provinces and most of Mindanao during the forecast period.



## 2m Temperature Week 2: May 15-21, 2023

Cooler than average surface air temperature will likely experience in northern Luzon; average to slightly cooler for the rest of the country except in Maguindanao & Sultan Kudarat (slightly warmer) during the forecast period.